

Recommendations

Approaching Java Servlets

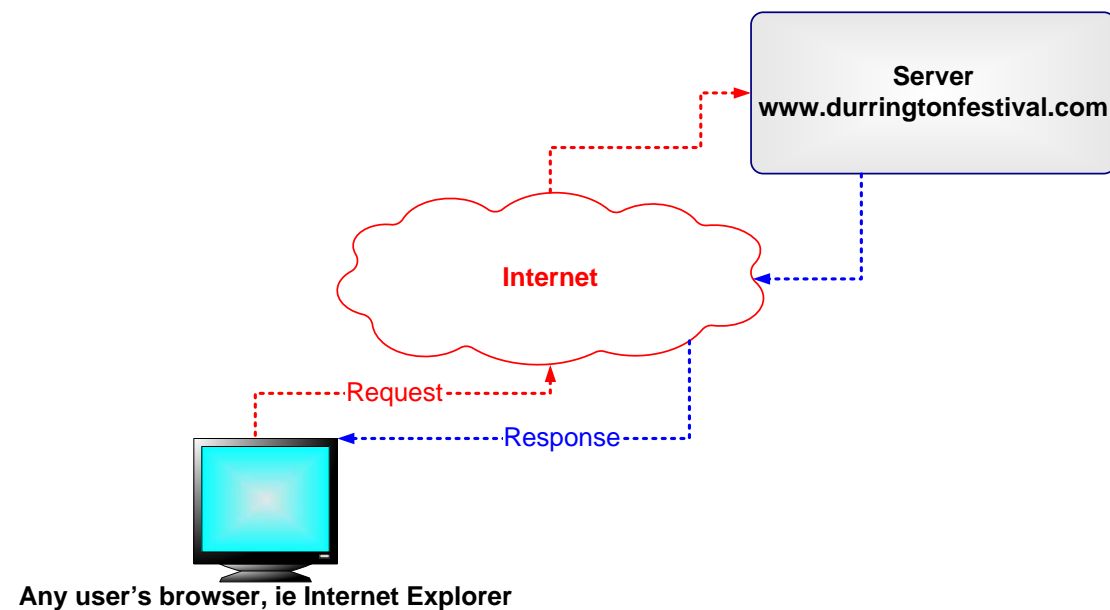
The website needs to be technically fast with a lot of rich media such as a library of photographs, videos, music, and archived content as well as a content management system.

All of these items are large file sizes, for example videos will be the largest at several Megabytes, or possibly Gigabytes, followed by music, where an average mp3 file will be of 5 Megabytes approximately, and photographs, which when compressed are relatively small at around 200 Kilobytes.

One byte is made up of

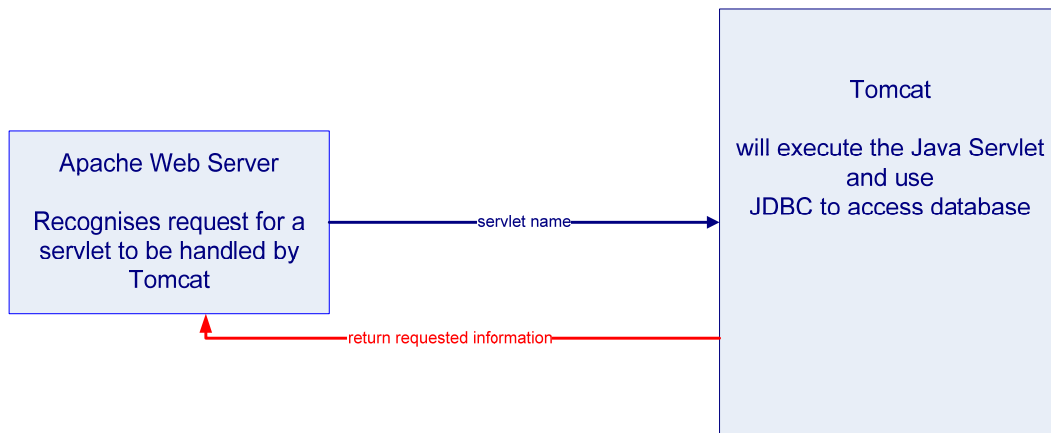
INSERT ABOUT 1024 BYTES AND DRAWINGS

Investigation was carried out on storage of the different data types. They may be stored in a database. A Java Servlet could 'go and fetch them' from the database when requested by any user's browser.

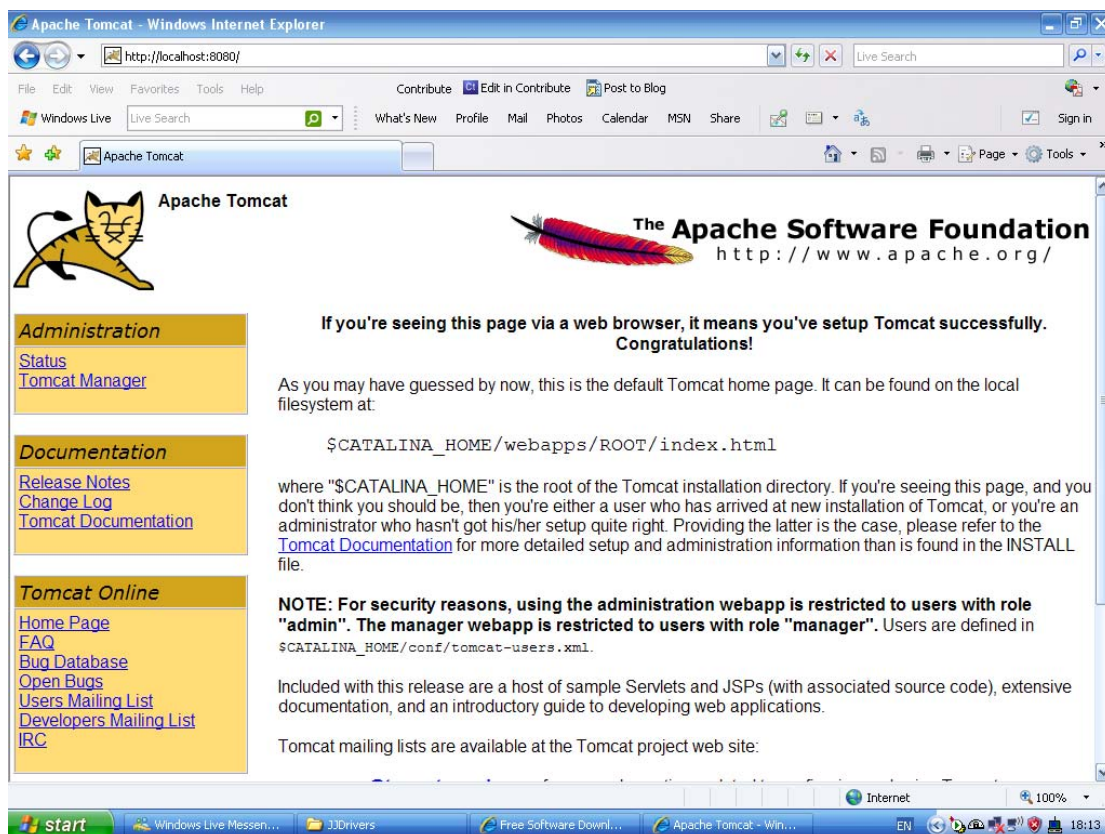


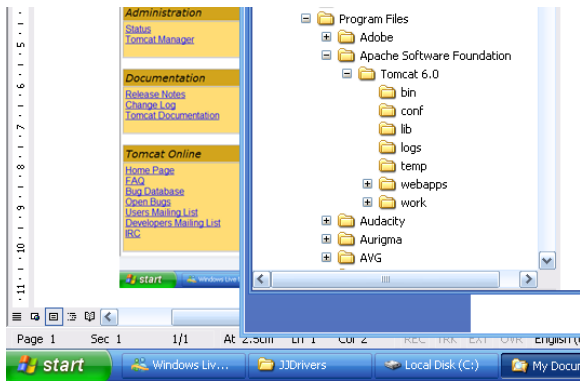
In order to show the content on the screen, the servlets need to be in the correct environment in which to work properly. Their correct environment is to sit on an Apache Server, in a container within Tomcat

CHECK THIS IS CORRECT



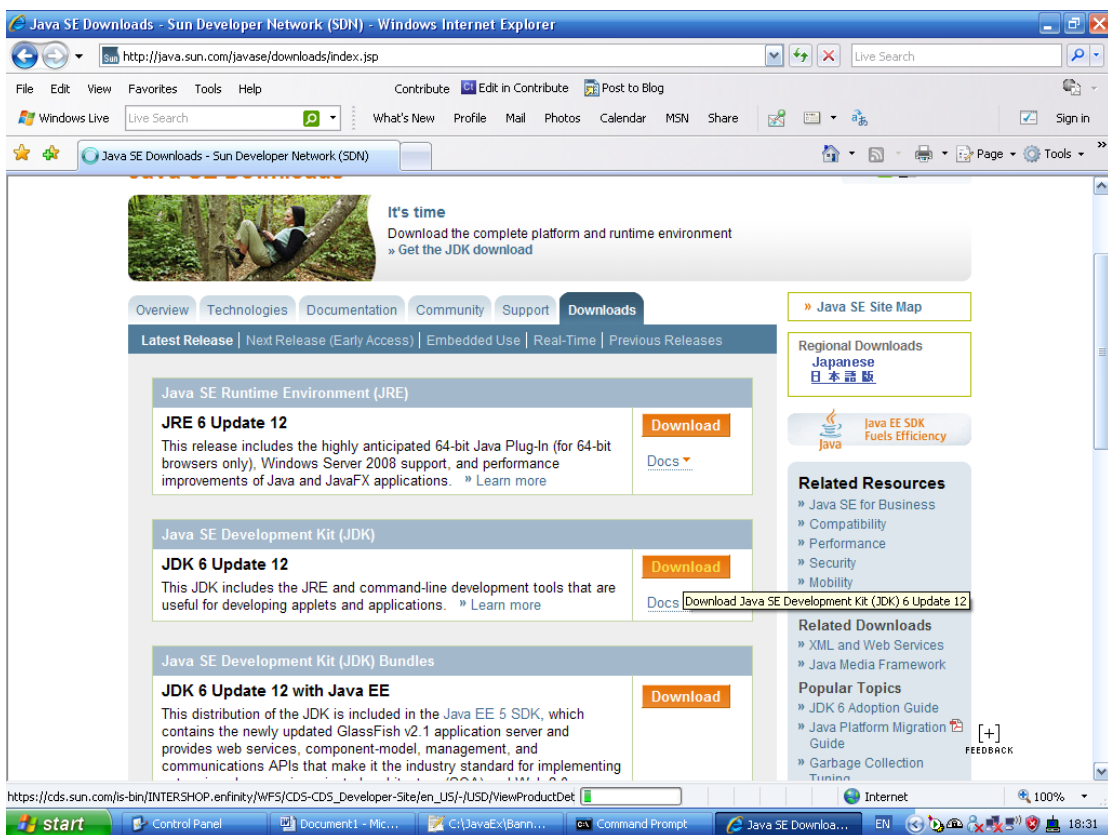
Apache Tomcat was downloaded and the localhost was set to Port 8080 as the computer being used for the development deployment of the servlets already has another 'server', a WAMP server which is set to Port 80.

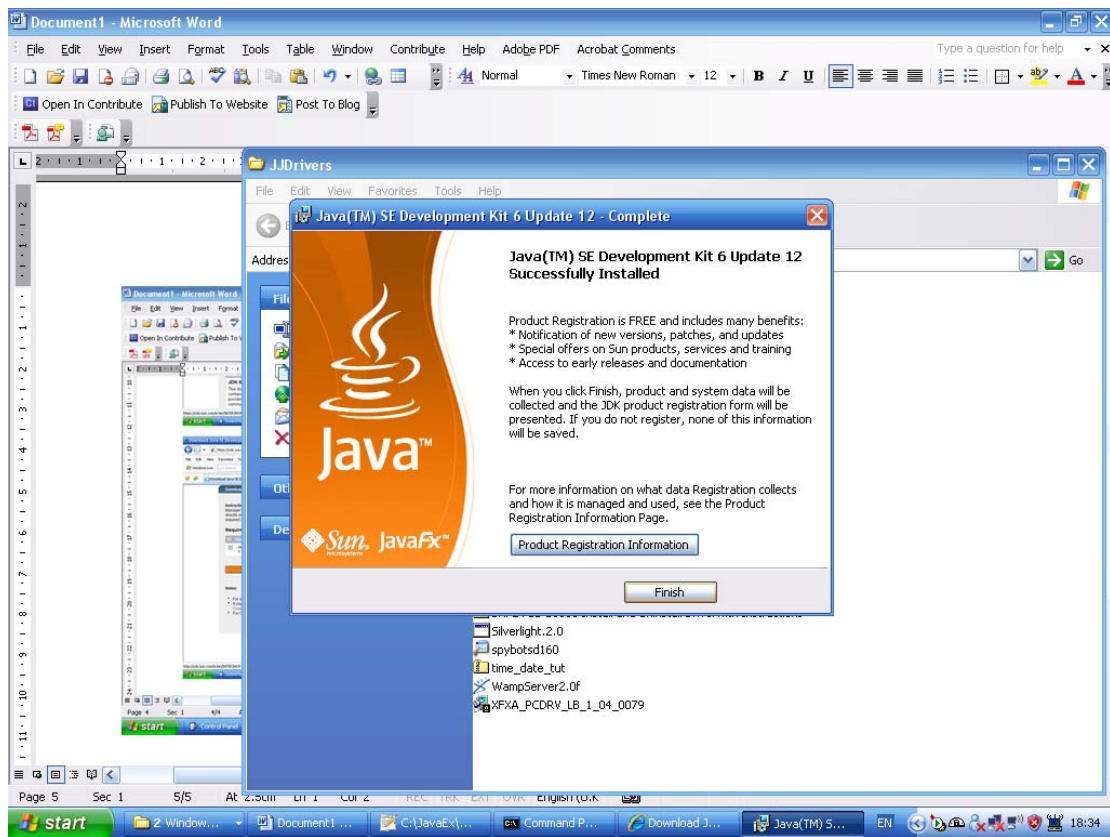
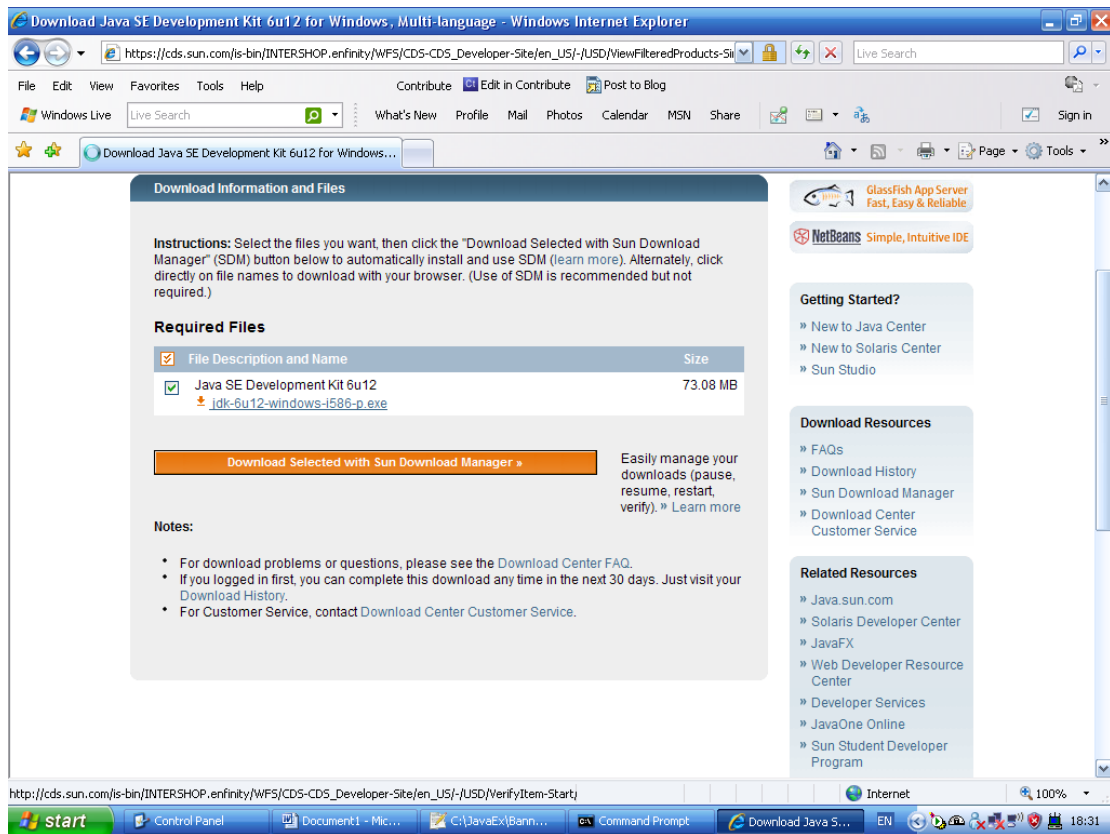




This shows the file directory of Apache Tomcat 6.0 which is in the C Directory under Program Files

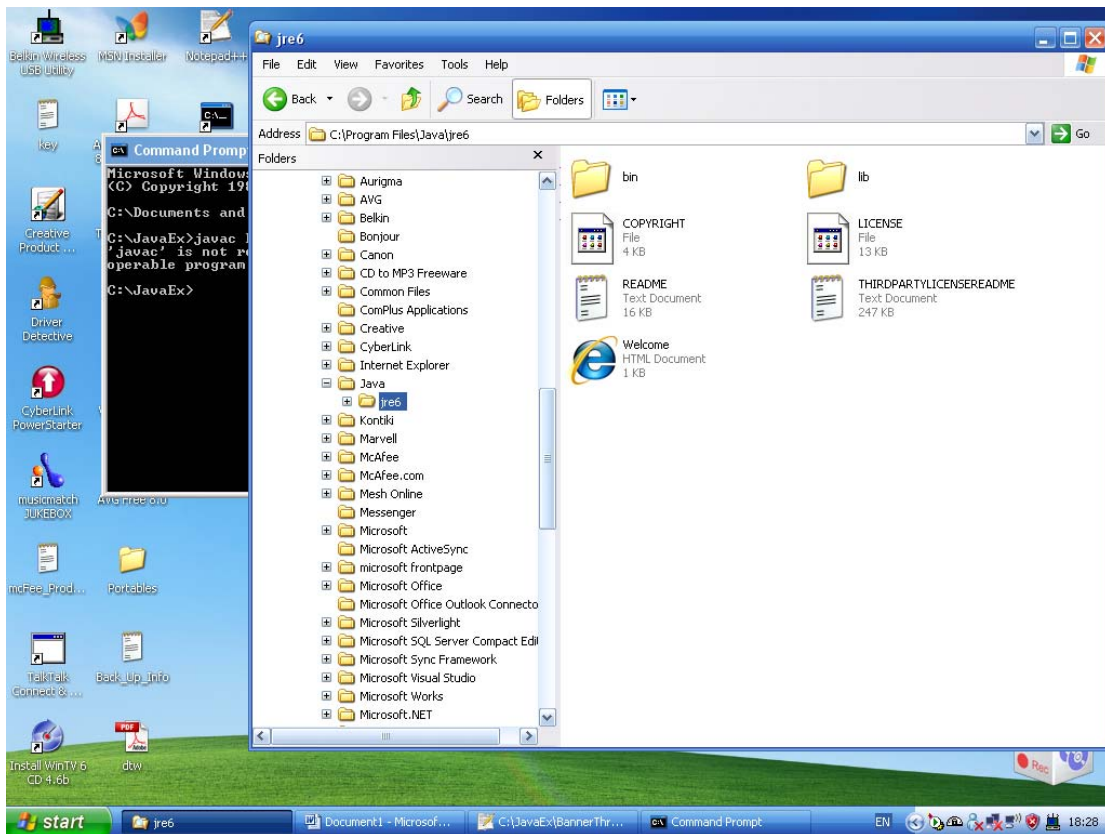
The next task was to download the latest Java Development Kit, which was done.

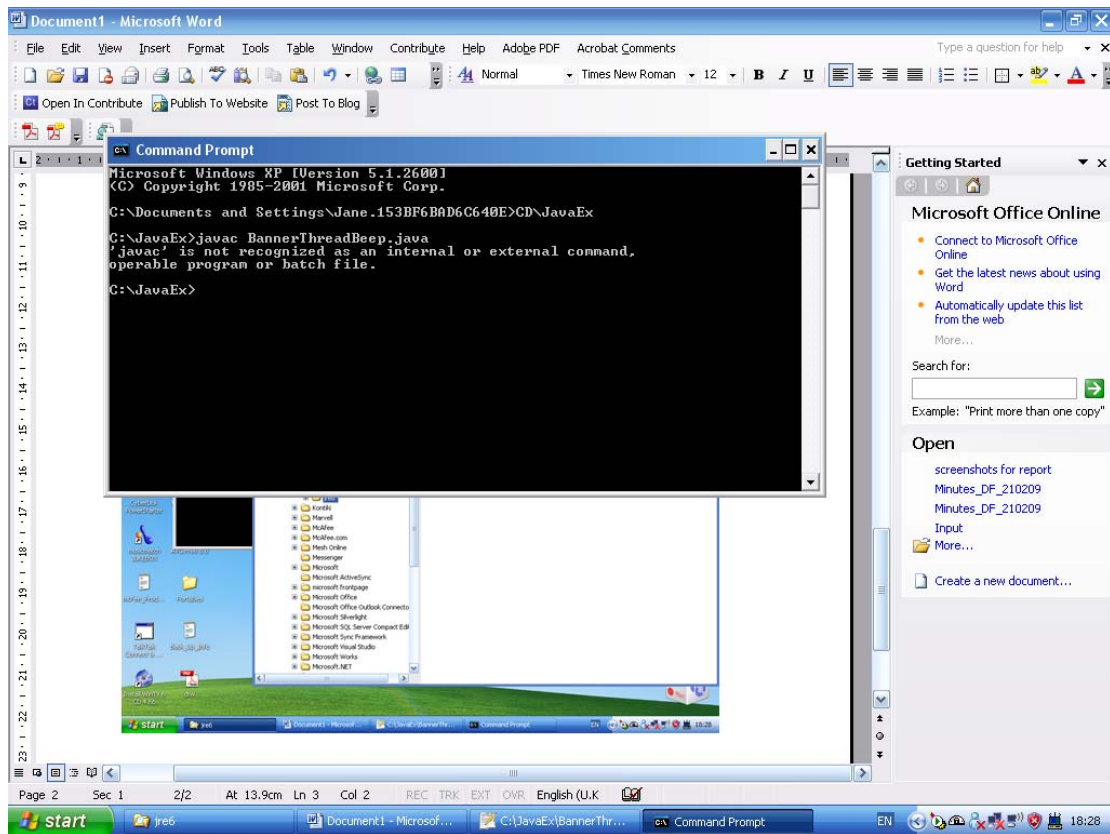




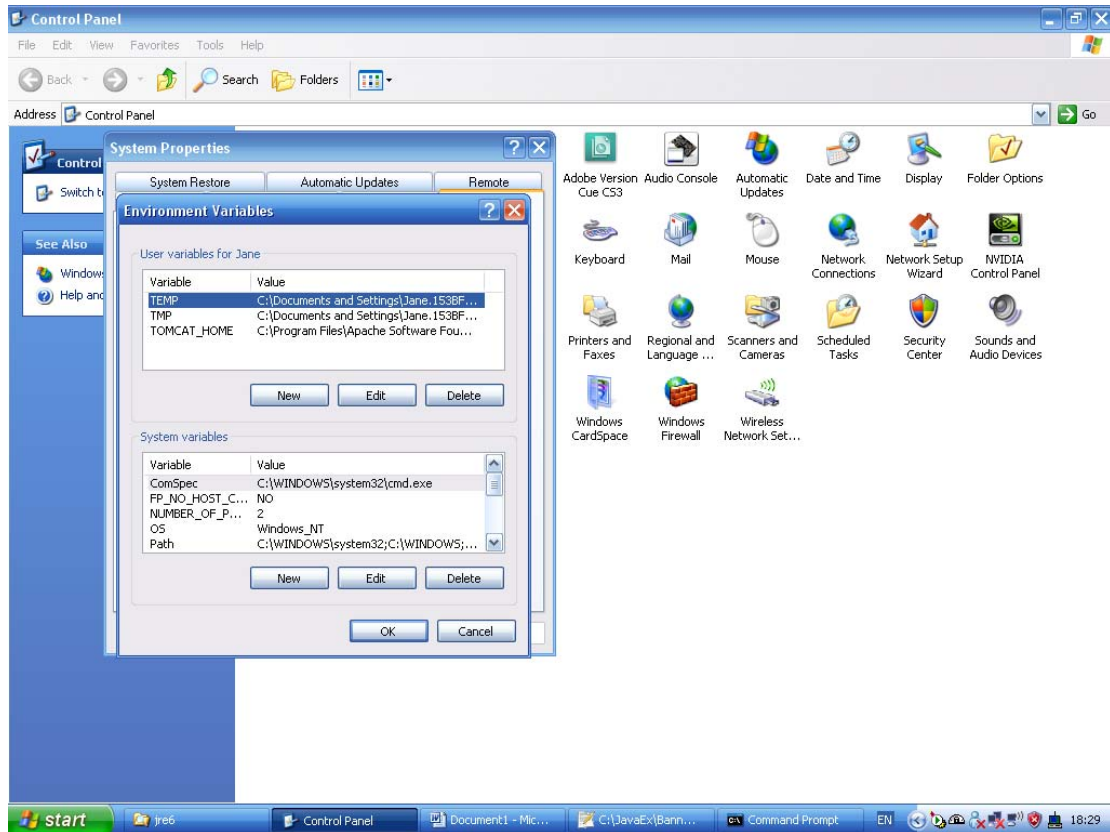
Type set to see the TOMCAT_HOME variable set

```
Command Prompt
HOMEDRIVE=C:
HOMEPATH=\Documents and Settings\Jane.153BF6BAD6C640E
LOGONSERVER=\\153BF6BAD6C640E
NUMBER_OF_PROCESSORS=2
OS=Windows_NT
Path=C:\WINDOWS\system32;C:\WINDOWS;C:\WINDOWS\System32\Wbem
PATHEXT=.COM;.EXE;.BAT;.CMD;.VBS;.VBE;.JS;.JSE;.WSF;.WSH
PROCESSOR_ARCHITECTURE=x86
PROCESSOR_IDENTIFIER=x86 Family 6 Model 15 Stepping 6, GenuineIntel
PROCESSOR_LEVEL=6
PROCESSOR_REVISION=0f06
ProgramFiles=C:\Program Files
PROMPT=$P$G
SESSIONNAME=Console
SystemDrive=C:
SystemRoot=C:\WINDOWS
TEMP=C:\DOCUME~1\JANE~1\153\LOCALS~1\Temp
TMP=C:\DOCUME~1\JANE~1\153\LOCALS~1\Temp
TOMCAT_HOME=C:\Program Files\Apache Software Foundation\Tomcat 6.0
USERDOMAIN=153BF6BAD6C640E
USERNAME=Jane
USERPROFILE=C:\Documents and Settings\Jane.153BF6BAD6C640E
windir=C:\WINDOWS
C:\Documents and Settings\Jane.153BF6BAD6C640E>
```

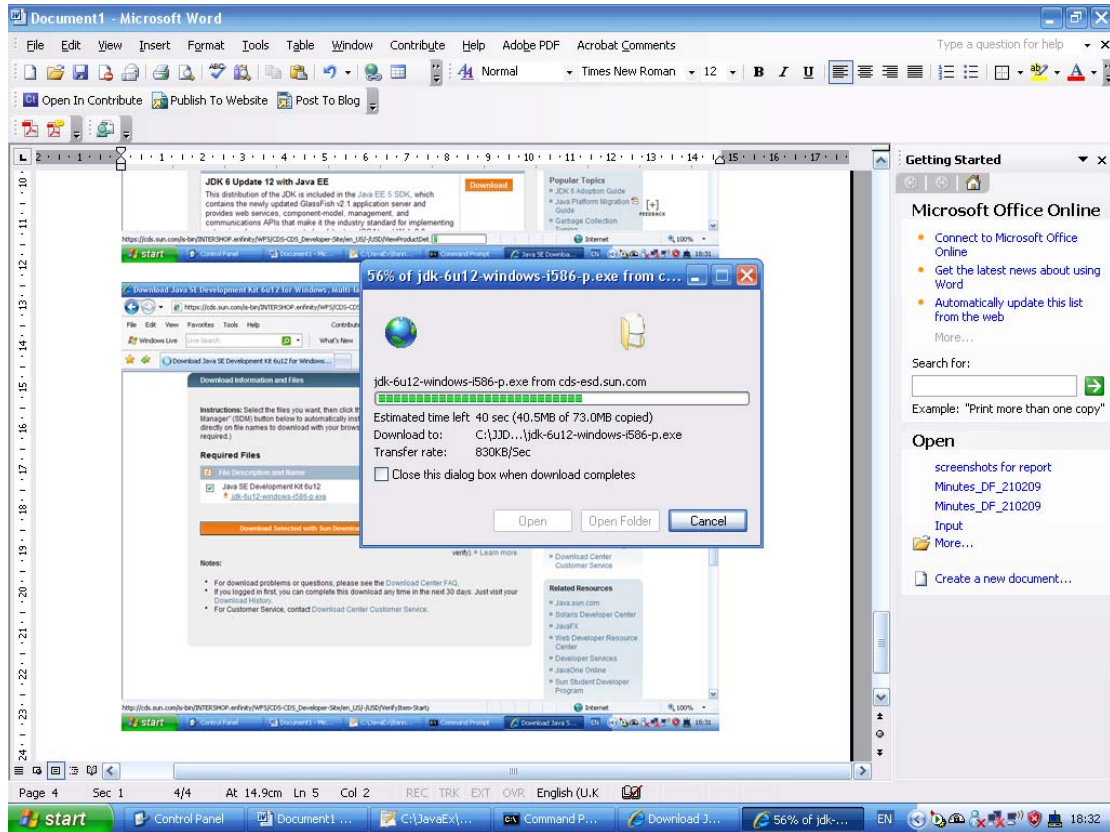




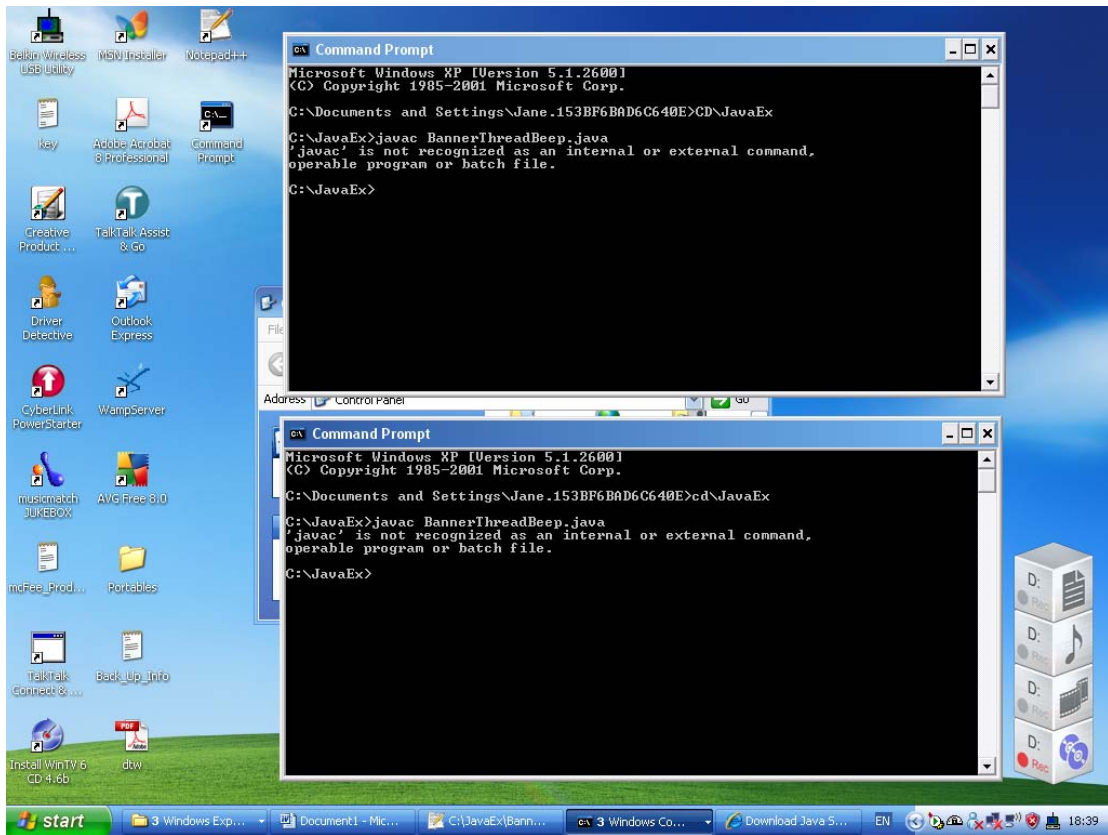
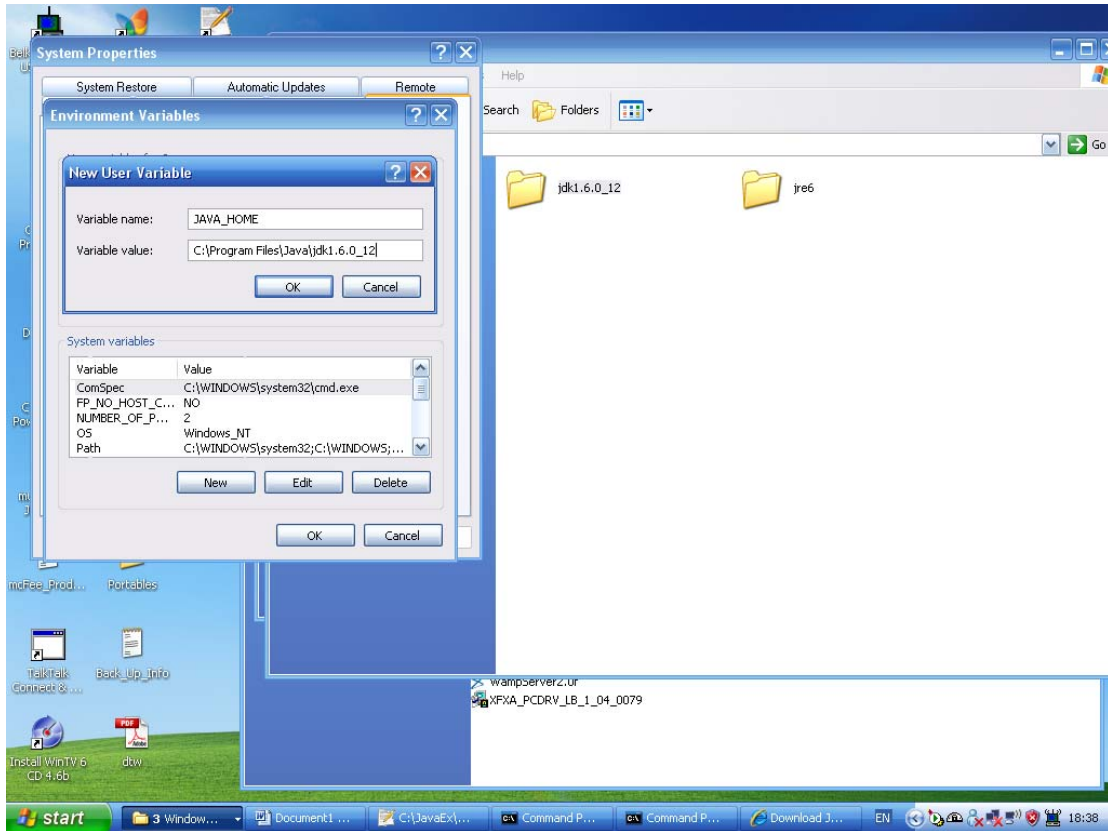
So how do I deal with this?
Look at environmental variables



There seems to be no JAVA_HOME

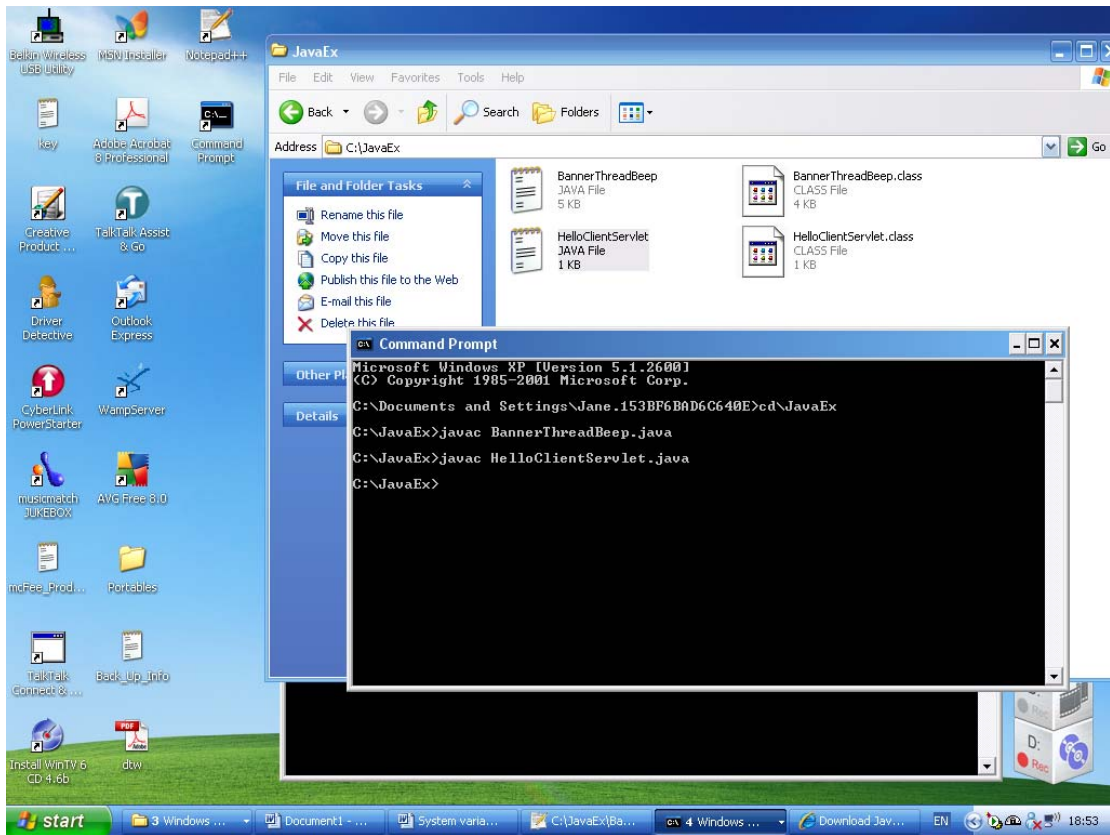
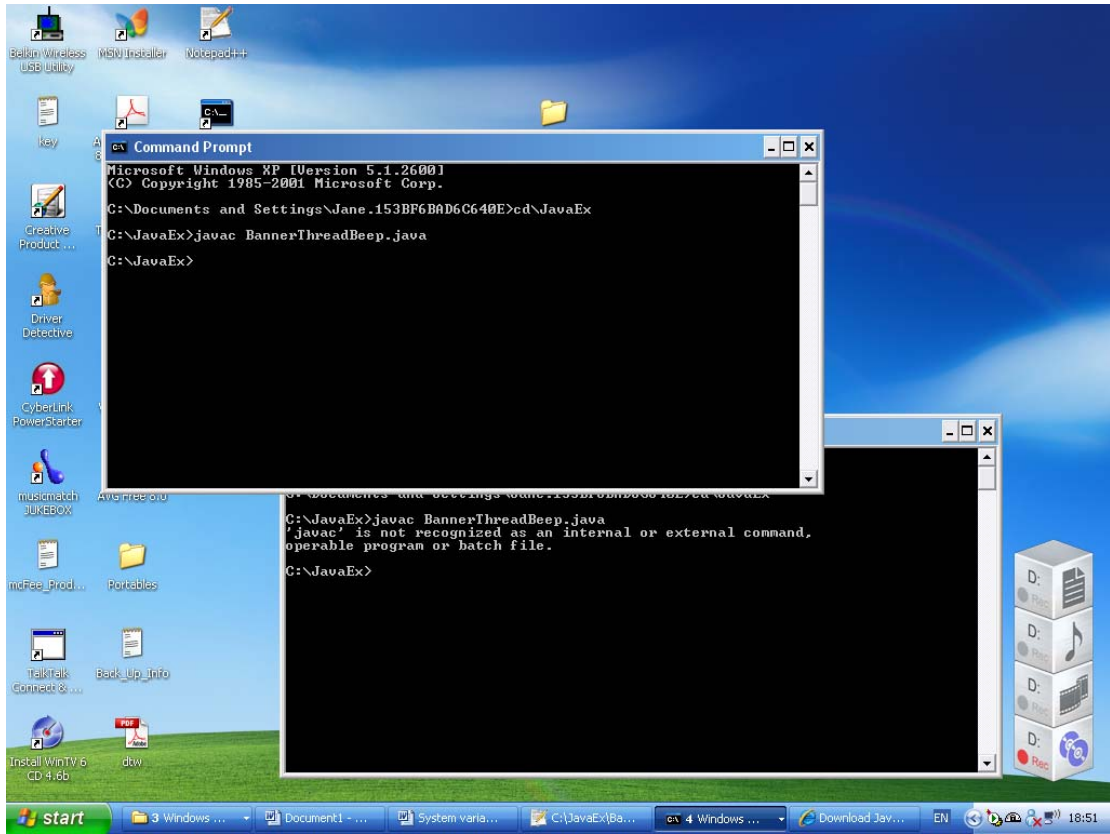


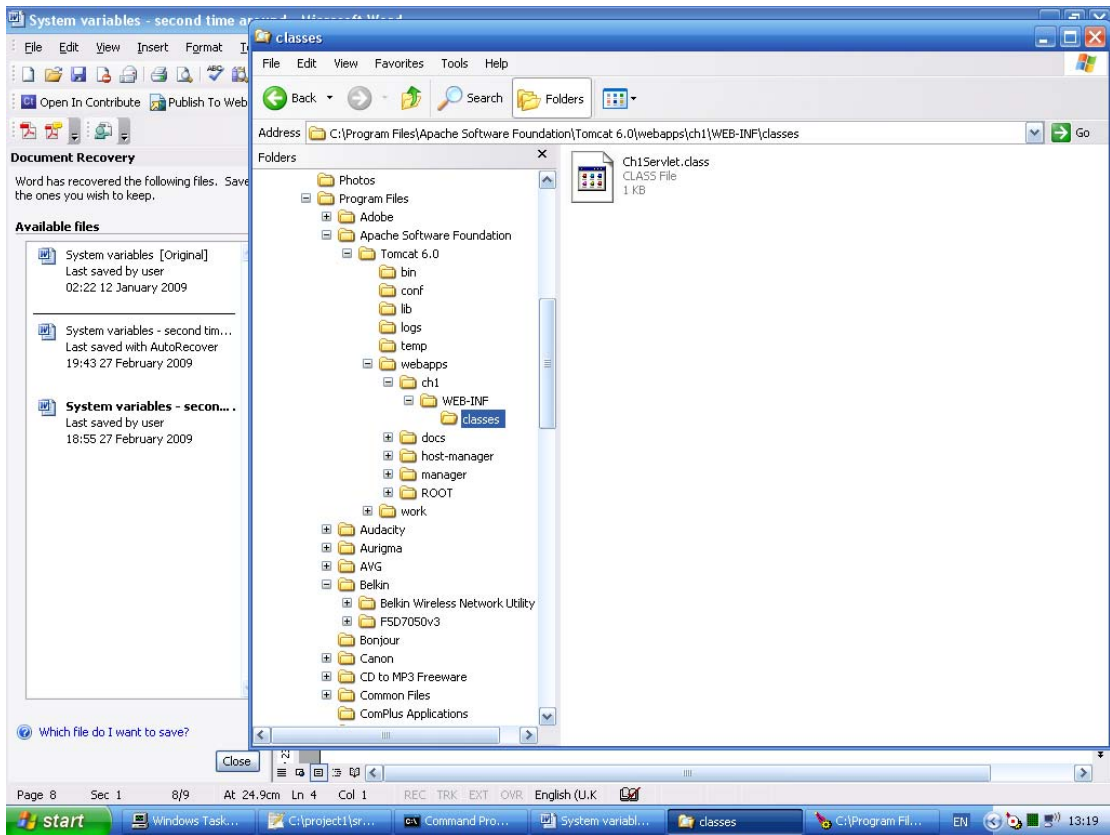
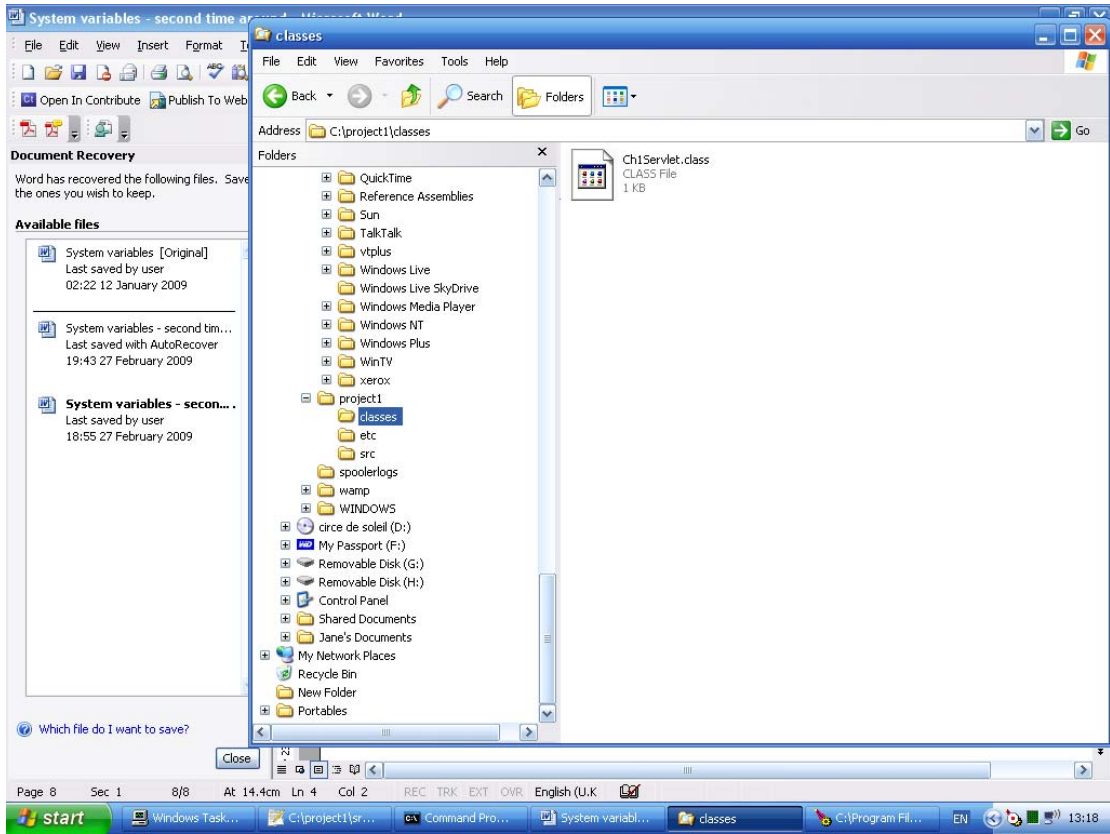
Set the Java Home environmental variable

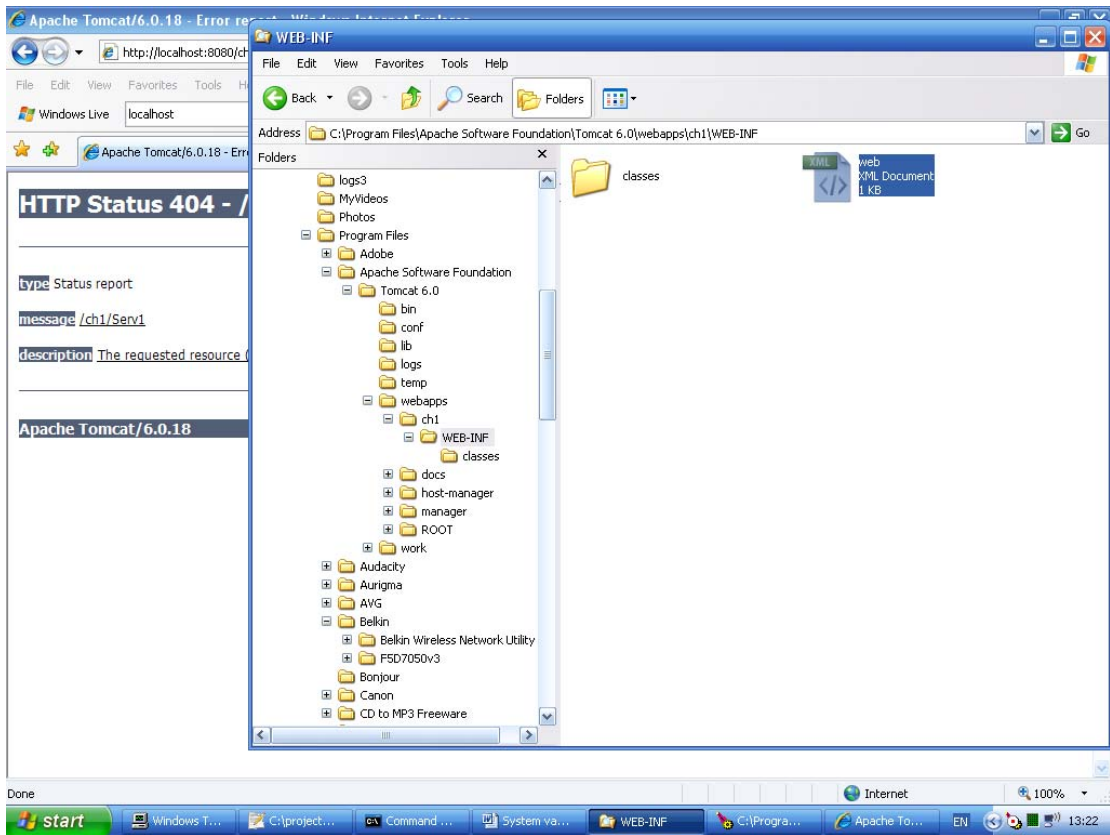
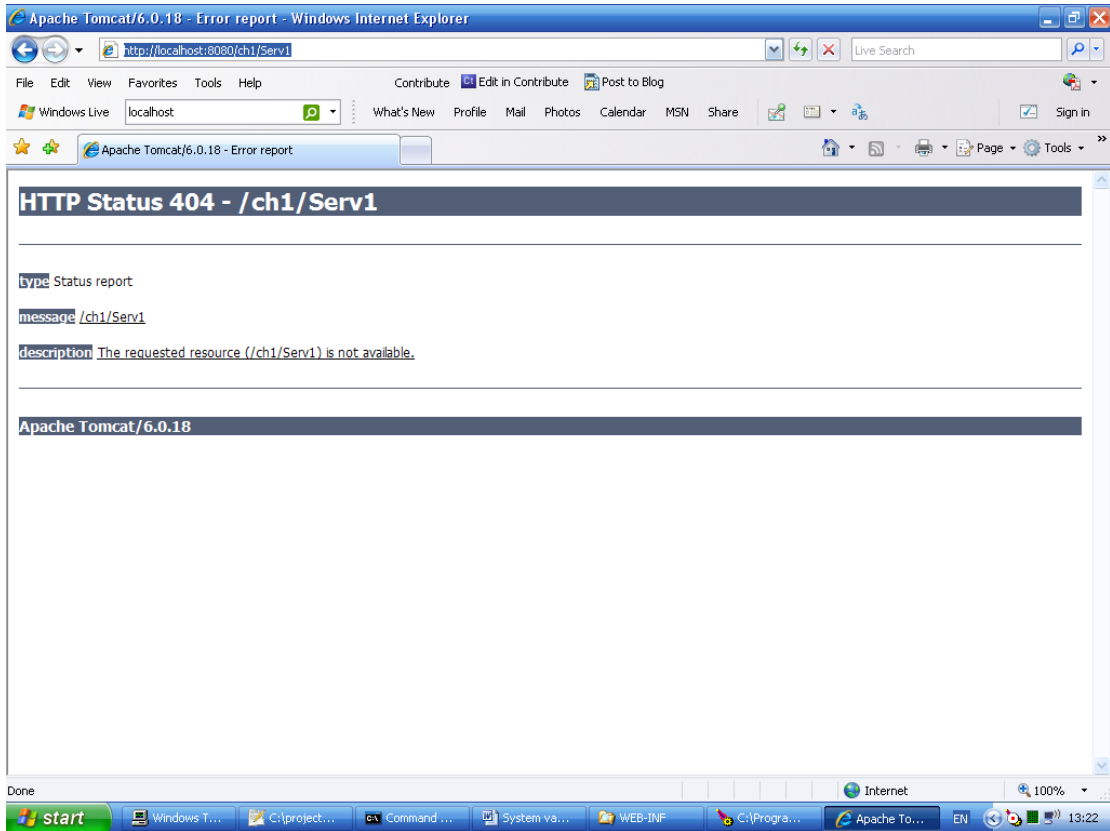


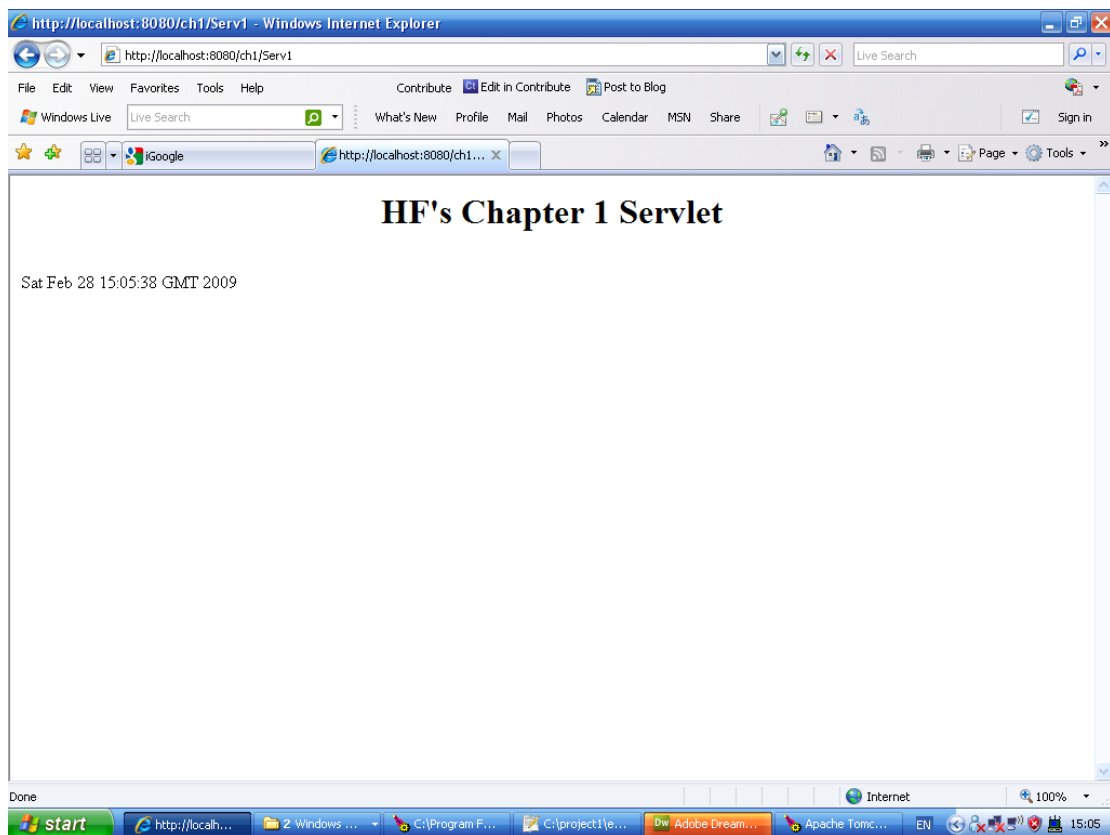
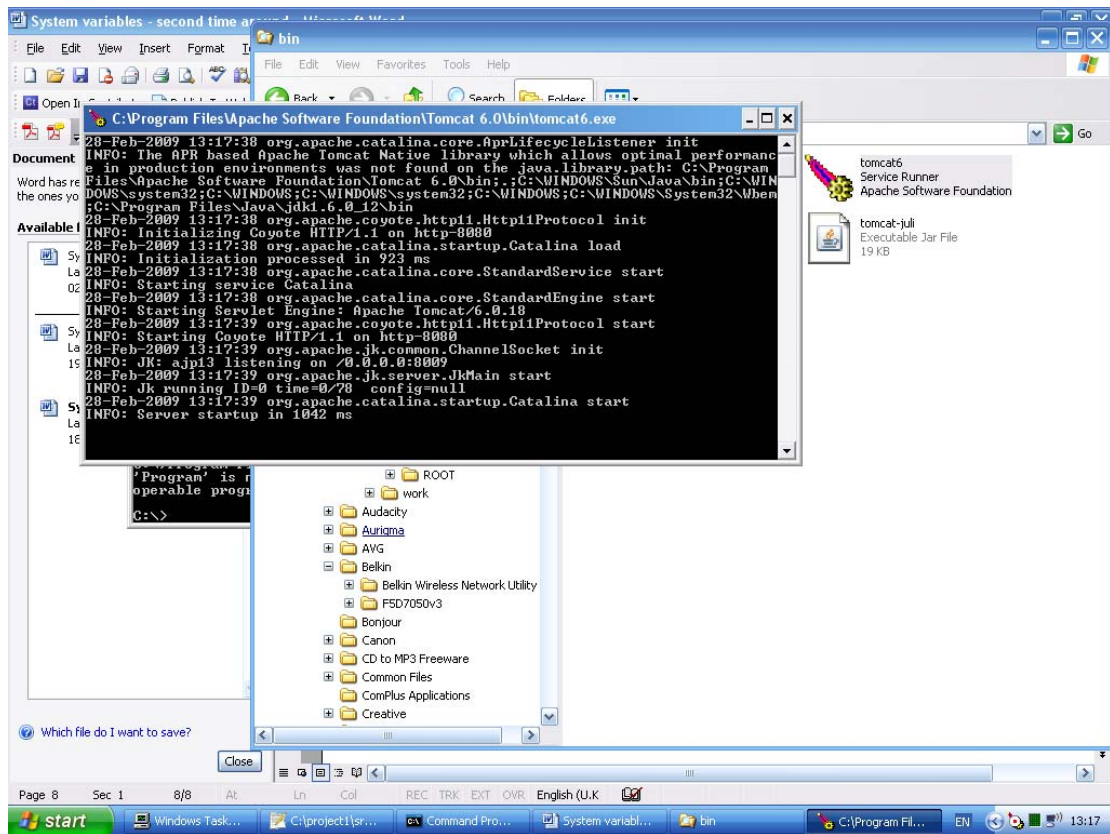
Looking at Java but can't work out what to do

Changed system variables







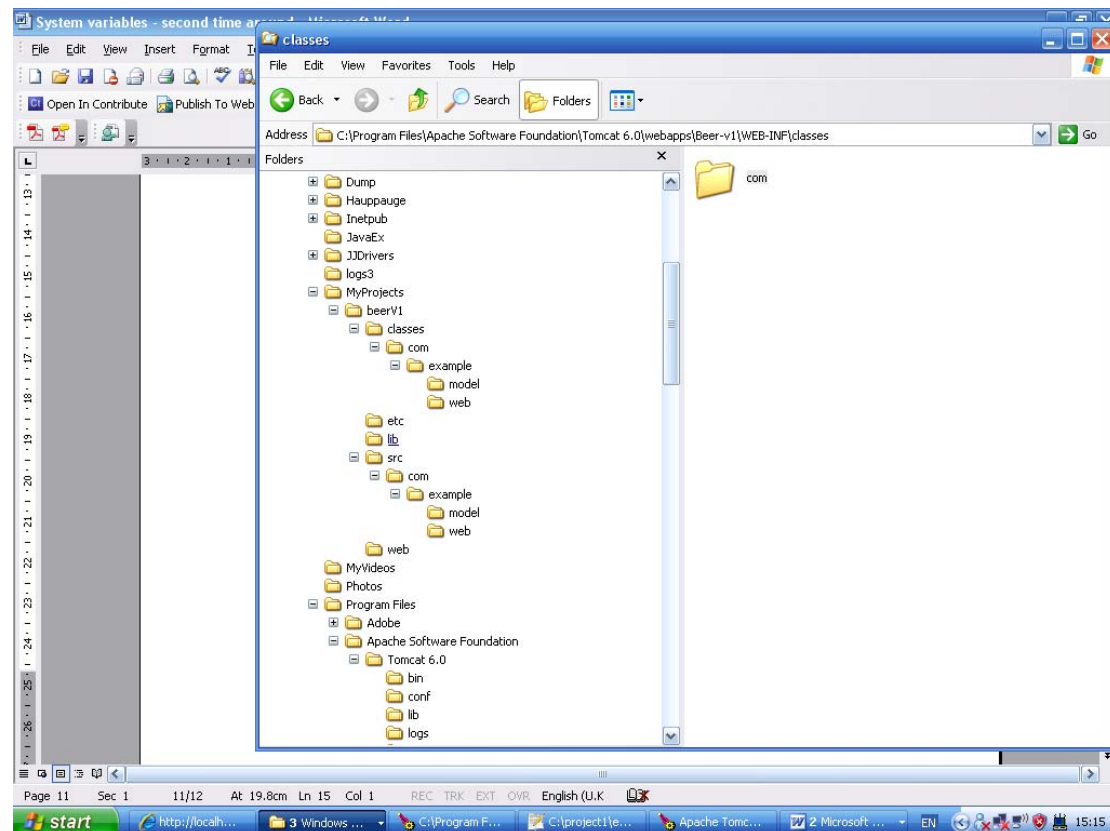


Problems occurred on the xml document – there were three typing errors , two found by me

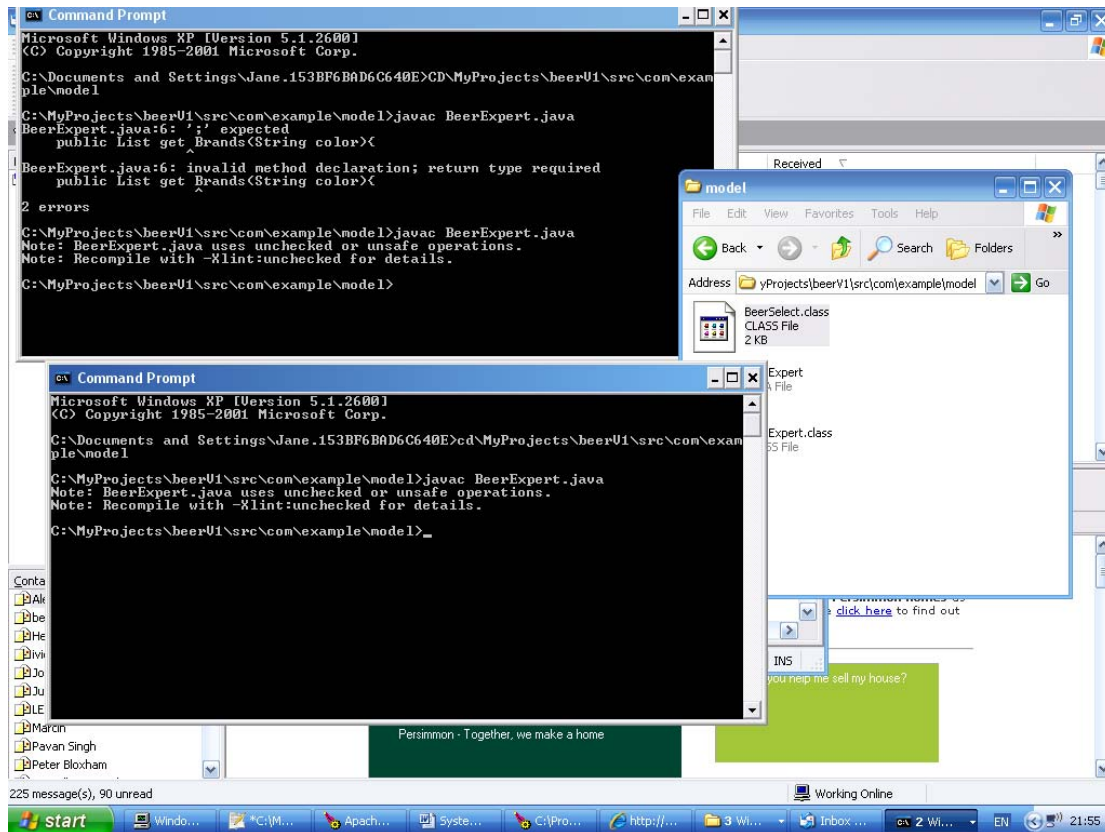
One was unseen, but shown in the error log of Catalina on the command prompt as a parser issue and that it was not mapping to the correct servlet name. Closer inspection showed there was a space Chapter 1 Servlet, trying to map to Chapter1 Servlet.

This now works, so this shows that the environment works.

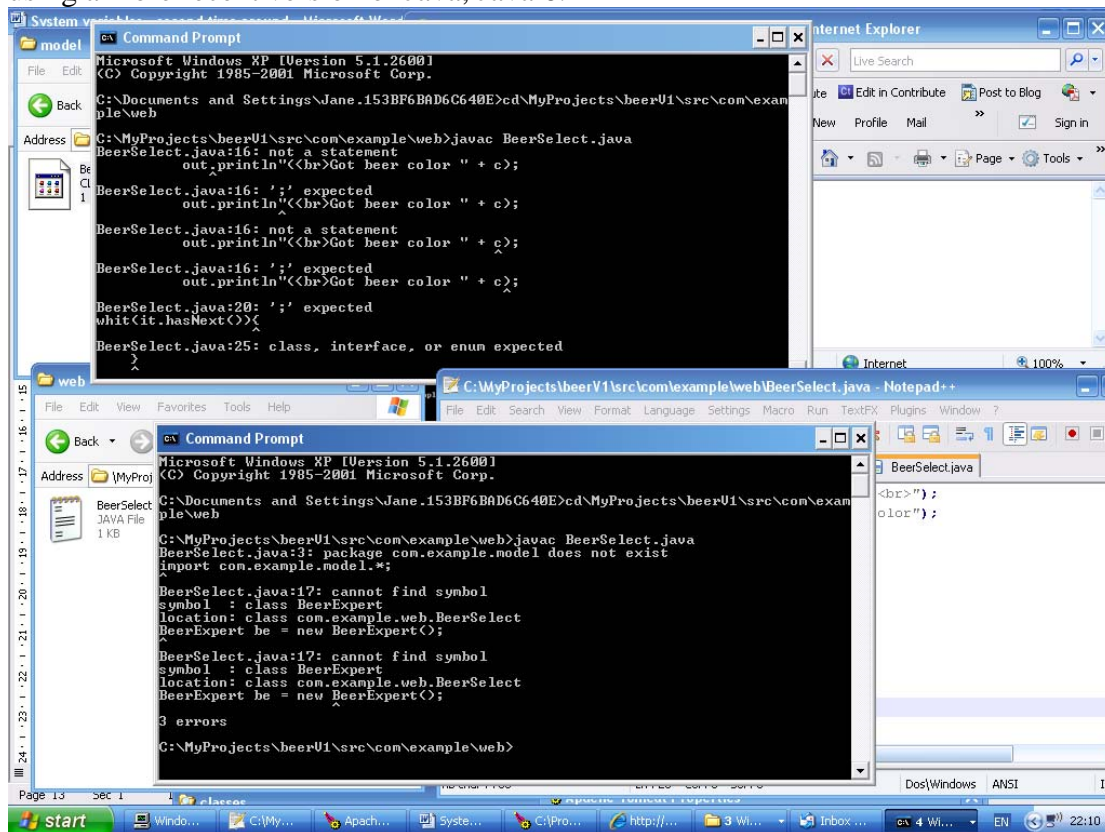
Next we have to try and access one class via another, this is from the book.
The development environment



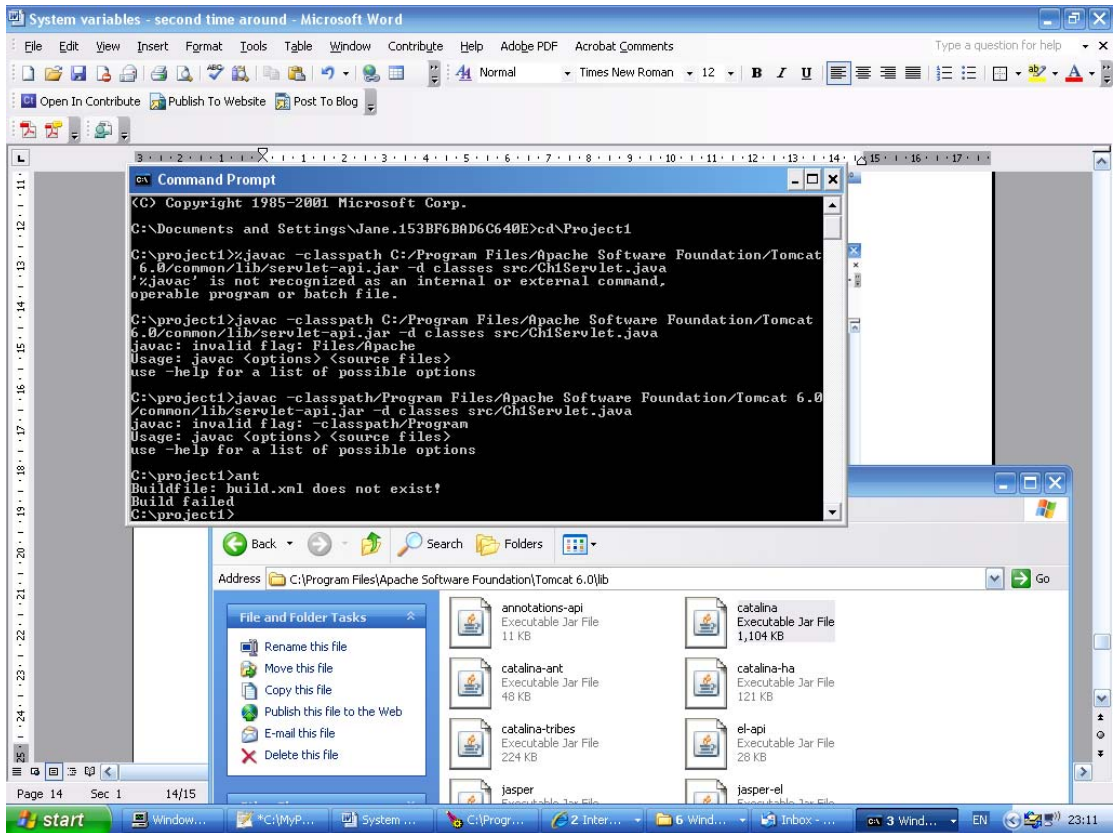
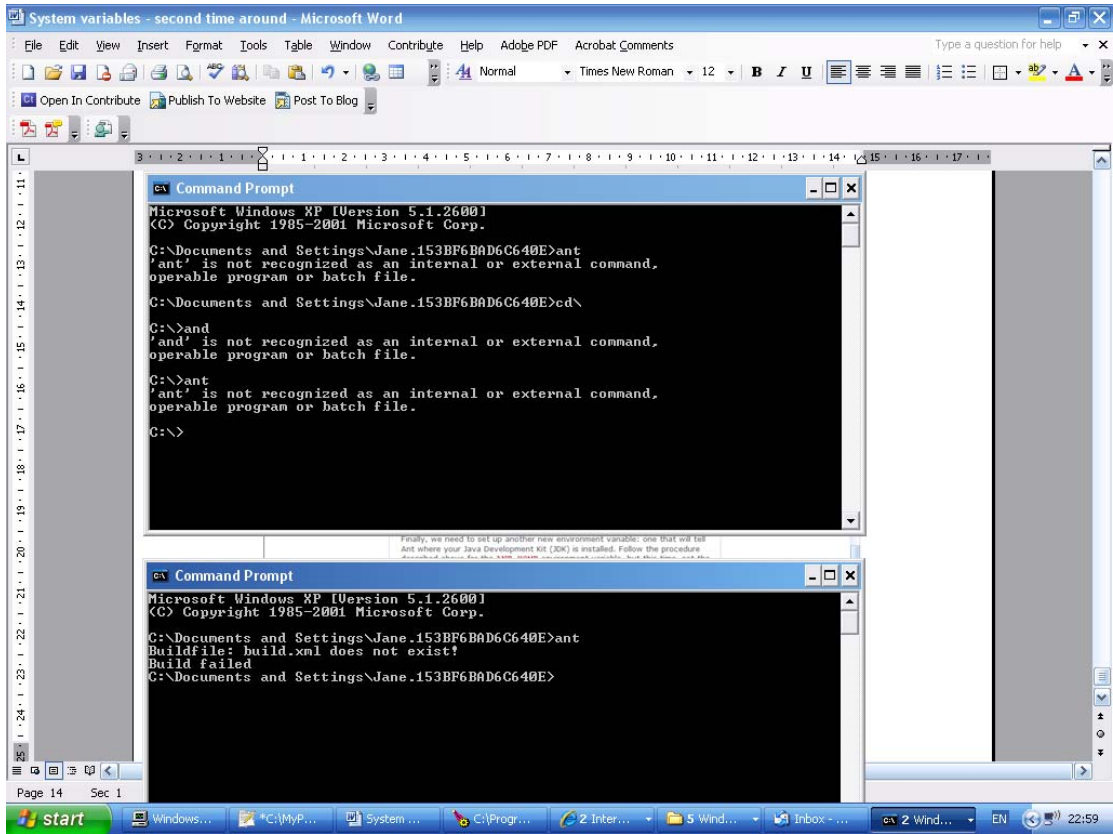
The deployment environment



Apparently this error message is because the code is written for Java 4 and we are using a more recent version of Java, Java 6.



This is where I got to before, apparently it may be the class path.



The screenshot shows a Windows XP desktop with a Windows Internet Explorer browser window open to the URL <http://www.sitepoint.com/article/apache-ant-demystified/>. A Command Prompt window is overlaid on the browser, showing the following text:

```
Microsoft Windows XP [Version 5.1.2600]
(C) Copyright 1985-2001 Microsoft Corp.

C:\Documents and Settings\Jane.153BF6BAD6C640E>ant
Buildfile: build.xml does not exist!
Build failed
C:\Documents and Settings\Jane.153BF6BAD6C640E>_
```

The browser window displays the article content, including a sidebar with links to "First Steps with Jakarta Struts" and "First Steps With Jakarta Struts, Part 2". The main content area contains the following text:

Finally, we need to set up another new environment variable: one that will tell Ant where your Java Development Kit (JDK) is installed. Follow the procedure described above for the `ANT_HOME` environment variable, but this time, set the Variable name to `JAVA_HOME` and the Variable value to the location at which your JDK is installed. On my machine it's `C:\Program Files\Java\jdk1.5.0`, but yours may be different. Now click OK several times to close all the open dialogues and property sheets.

You can confirm that these steps have been successful by opening a Command Prompt and entering `set ant_home` followed by Enter, and then `set java_home` followed by Enter. The respective paths that you entered in the steps above should be displayed. If this doesn't work, try logging off and back on again.

We also need to verify that Ant is installed correctly and ready to go. In the same Command Prompt window, type `ant -version` followed by Enter. If all is well, then Ant should respond by telling you which version it is and when it

The screenshot shows the same Windows XP desktop as the previous image. The Command Prompt window now shows the following text:

```
Microsoft Windows XP [Version 5.1.2600]
(C) Copyright 1985-2001 Microsoft Corp.

C:\Documents and Settings\Jane.153BF6BAD6C640E>set ant_home
ANT_HOME=C:\Ant\apache-ant-1.7.1

C:\Documents and Settings\Jane.153BF6BAD6C640E>set java_home
JAVA_HOME=C:\Program Files\Java\jdk1.6.0_12

C:\Documents and Settings\Jane.153BF6BAD6C640E>_
```

The browser window displays the same article content as before. The main content area contains the following text:

Ant where your Java Development Kit (JDK) is installed. Follow the procedure described above for the `ANT_HOME` environment variable, but this time, set the Variable name to `JAVA_HOME` and the Variable value to the location at which your JDK is installed. On my machine it's `C:\Program Files\Java\jdk1.5.0`, but yours may be different. Now click OK several times to close all the open dialogues and property sheets.

You can confirm that these steps have been successful by opening a Command Prompt and entering `set ant_home` followed by Enter, and then `set java_home` followed by Enter. The respective paths that you entered in the steps above should be displayed. If this doesn't work, try logging off and back on again.

We also need to verify that Ant is installed correctly and ready to go. In the same Command Prompt window, type `ant -version` followed by Enter. If all is well, then Ant should respond by telling you which version it is and when it was compiled. If this is the case then we're ready to start learning more about Ant and to write our first build file!

Good Things Come In Threes: Projects, Targets And Tasks

Apache Ant Demystified - Parts 1 and 2 [Java and J2EE] - Windows Internet Explorer

Command Prompt

```

Microsoft Windows XP [Version 5.1.2600]
(C) Copyright 1985-2001 Microsoft Corp.

C:\Documents and Settings\Jane.153BF6BAD6C640E>set ant_home
ANT_HOME=C:\Ant\apache-ant-1.7.1

C:\Documents and Settings\Jane.153BF6BAD6C640E>set java_home
JAVA_HOME=C:\Program Files\Java\jdk1.6.0_12

C:\Documents and Settings\Jane.153BF6BAD6C640E>ant -version
Apache Ant version 1.7.1 compiled on June 27 2008
C:\Documents and Settings\Jane.153BF6BAD6C640E>

```

OME. While button in ANT_HOME ple, end this

at will tell

Ant where your Java Development Kit (JDK) is installed. Follow the procedure described above for the **ANT_HOME** environment variable, but this time, set the Variable name to **JAVA_HOME** and the Variable value to the location at which your JDK is installed. On my machine it's C:\Program Files\Java\jdk1.5.0, but yours may be different. Now click OK several times to close all the open dialogues and property sheets.

You can confirm that these steps have been successful by opening a Command Prompt and entering **set ant_home** followed by Enter, and then **set java_home** followed by Enter. The respective paths that you entered in the steps above should be displayed. If this doesn't work, try logging off and back on again.

We also need to verify that Ant is installed correctly and ready to go. In the same Command Prompt window, type **ant -version** followed by Enter. If all is well, then Ant should respond by telling you which version it is and when it was compiled. If this is the case then we're ready to start learning more about Ant and to write our first build file!

Good Things Come In Threes: Projects, Targets And Tasks

Apache Ant Demystified - Parts 1 and 2 [Java and J2EE] - Windows Internet Explorer

http://www.sitepoint.com/article/apache-ant-demystified/2/

Command Prompt

```

-nice number      A niceness value for the main thread:
                  1 (lowest) to 10 (highest); 5 is the default
-nouserlib        Run ant without using the jar files from
                  ${user.home}/.ant/lib
-noclasspath      Run ant without using CLASSPATH
-autoproxy        Java1.5+: use the OS proxy settings
-main <class>     override Ant's normal entry point

C:\project>ant -projecthelp
Buildfile: build.xml

Build file for the Hello World application.

Main targets:
Other targets:
Default target: compile
C:\project>_

```

the way nature intended: from the command line.

Open a Command Prompt at the directory in which your build.xml file is saved. Now type **ant -projecthelp**, followed by Enter. Ant should display the following information:

```

Buildfile: build.xml

Build file for the Hello World application.

Main targets:

compile Compiles all sources.
Default target: compile

```

Learn more with SitePoint books

- [Boost Your Web Site's Income](#)
- [Learn Search Engine Marketing](#)
- [Win Bigger Freelance Clients](#)
- [Learn Email Marketing](#)
- [Learn Beautiful Website Design](#)
- [Learn CSS](#)
- [Learn JavaScript](#)
- [Learn PHP](#)
- [101 CSS Tips, Tricks & Hacks](#)
- [101 PHP Tips, Tricks & Hacks](#)
- [101 JavaScript Tips, Tricks & Hacks](#)

Designers Earn \$\$\$

